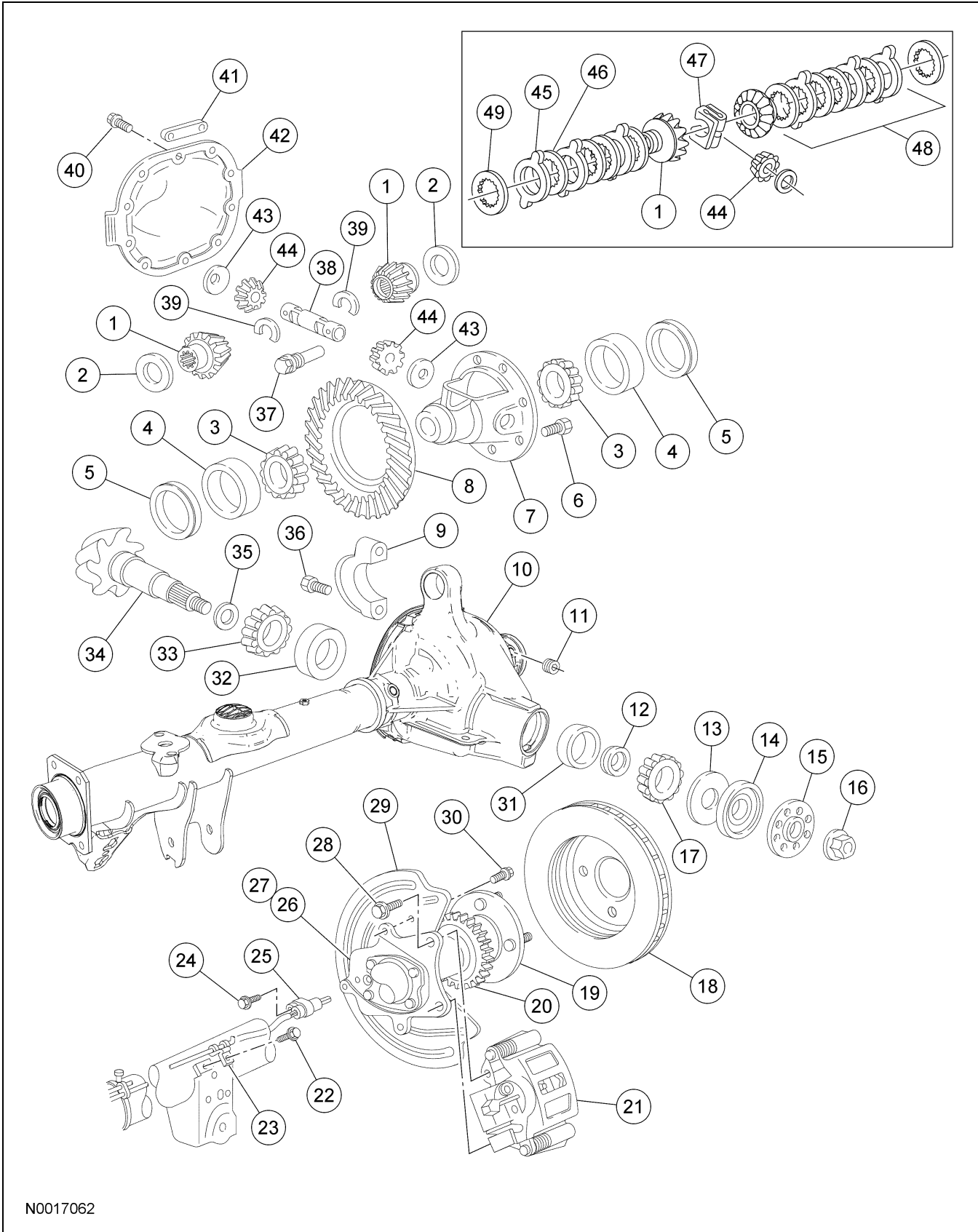


DESCRIPTION AND OPERATION

Rear Drive Axle and Differential



N0017062

DESCRIPTION AND OPERATION (Continued)

Item	Part Number	Description
1	4236	Differential side gear
2	4228	Differential side gear thrust washer
3	4221	Differential bearing
4	4222	Differential bearing cup
5	4067	Differential bearing shim
6	4216	Differential ring gear bolt (10 required)
7	4204	Differential case
8	—	Differential ring gear (part of 4209)
9	—	Differential bearing cap (2 required [part of 4010])
10	4010	Axle housing
11	373098-S	Filler plug
12	4662	Drive pinion collapsible spacer
13	4670	Drive pinion shaft oil slinger
14	4676	Drive pinion seal
15	4851	Pinion flange
16	389546-S100	Pinion nut
17	4621	Drive pinion bearing (outer)
18	2C026	Brake disc
19	—	Axle shaft flange (2 required [part of 4234])
20	2C189	Anti-lock sensor indicator (2 required)
21	2552	Disc brake caliper (2 required)
22	N601951-S2	Brake line clip bolt
23	N804361-S100	Brake line clip
24	—	Anti-lock sensor bolt (2 required)
25	2C190	Anti-lock sensor (2 required)
26	2C101	LH disc brake adapter
27	2C100	RH disc brake adapter
28	N8015163-S190	Disc brake caliper anchor bolt (4 required)
29	2C028	Brake disc shield (2 required)
30	N602726-S2	Brake disc shield bolt (6 required)
31	4616	Drive pinion bearing cup (outer)
32	4628	Drive pinion bearing cup (inner)
33	4630	Drive pinion bearing (inner)

(Continued)

Item	Part Number	Description
34	—	Drive pinion gear (part of 4209)
35	4663	Drive pinion bearing adjustment shim
36	—	Differential bearing cap bolt (4 required [part of 4010])
37	4241	Differential pinion shaft lock bolt
38	4211	Differential pinion shaft
39	4N237	Axle shaft U-washer
40	383548	Differential housing cover bolt (10 required)
41	—	Axle identification tag
42	4033	Differential housing cover
43	4230	Differential pinion gear thrust washer
44	4215	Differential pinion gear
45	—	Steel plate (part of 4947)
46	—	Clutch disc (part of 4947)
47	4214	Differential clutch spring
48	4947	Differential clutch pack
49	4A324	Rear axle differential clutch shim

- The axle housing consists of a cast center section with 2 steel tube assemblies and a stamped differential housing cover. The differential housing cover uses silicone sealant as a gasket.
- The hypoid-design gearset consists of 8.8-in ring gear and a drive pinion gear. Two opposed tapered roller bearings (drive pinion bearings) support the drive pinion in the axle housing.
- A drive pinion collapsible spacer, located on the differential pinion shaft, maintains drive pinion bearing preload. The pinion nut adjusts the drive pinion bearing preload.
- Differential bearing shims, located between the differential bearing cups and the axle housing, adjust the differential bearing preload and the differential ring gear backlash.
- The differential case is a one-piece design with 2 openings to allow for assembly of the internal components and lubricant flow. Two opposed tapered roller bearings (differential bearings) support the differential assembly in the axle housing. Removable bearing caps retain the differential assembly in the axle housing.

DESCRIPTION AND OPERATION (Continued)

- Inside the differential assembly, the differential pinion shaft supports 2 differential pinion gears. The pinion gears engage the differential side gears, to which the axle shafts are splined. The differential pinion shaft lock bolt retains the differential pinion shaft in the differential case.
 - An embossed metal tag, bolted to the differential housing cover, contains the axle identification.
-